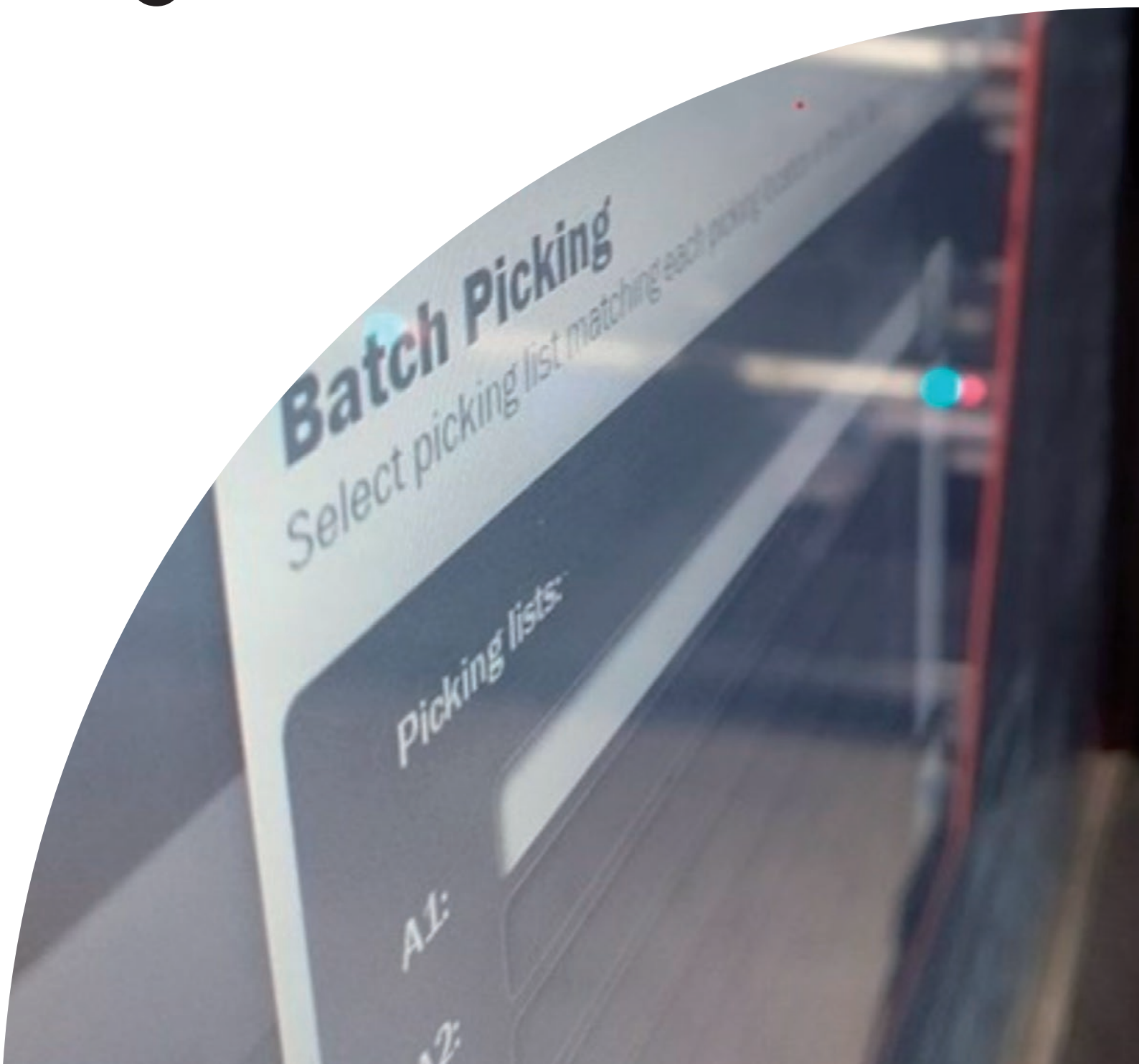


Introduction to Agilon Software





Connecting Material flow to Data

Agilon Software Features at glance

Warehouse automation becomes simpler with Agilon's smart solution. Its design helps businesses keep up and work more smoothly. The system's key part, Agilon Software, includes tools that make automated warehouses run well.

Agilon Software consists of three main parts: the Web Portal, the Access Point, and the Agilon Mobile app. Together, they make for an easy-to-use system that doesn't need a lot of effort to keep data right.

The Web Portal gives important information anytime you need it. It helps you see what's happening with your items and make smart decisions.

The Agilon Mobile app is good for managing tasks quickly, and it works well even in places that are not part of the main warehouse.

At the Access Point, users interact with the Agilon system. It's full of features that make work faster and more secure. The system lets you set different levels of access for different users. When Agilon Software works with other systems, like ERP and MES, it's easier to report and track what's being used. More details in the following sections explain how Agilon Software improves how materials are managed and the overall operation of warehouses.

	WEB PORTAL	ACCESS POINT	MOBILE	INTEGRATIONS
Material management	Either limited or full control over items, orders, users, contracts and transactions depending on the user group privileges.	User group privilege based functionality to create and edit item data. Unit weight measurement.	View item data based on user privileges. Storage location handling.	One-way or two-way synchronisation of item data.
Order management	Creating, editing, monitoring of orders, acknowledgements, etc.	Goods receiving process support.	Goods receiving to other warehouse locations.	Orders input from ERP and output for order receiving.
User management	Full control over users, their privileges and visibility.	Login functionality by PIN code, fingerprint or access card.	Login with credentials.	User data can be retrieved from external access control system.
Work queue and picking lists	Individual picking lists assigned to access points for work assignment.	Start/stop/pause picking, batch picking, light guided picking.	Start/stop/pause picking from external items.	Picking lists retrieved from ERP/MES. Notifications delivered back.
Traceability features	Full access to transaction details. Edit the last transaction.	Automatic: user authentication, time, material, weight, photo. Manually entered: batch numbers, serial numbers. Cost centre tracking.	Authentication with credentials. Cost centre, batch number and serial number tracking.	Traceability data delivered along with transaction data.
Reporting	Item consumption by cost centre, user, user groups and inventory reports. Balance alerts, on loan listings.	Listing of packages in the system and in external locations.	Listing of packages in external locations and in Agilon.	Any ERP/MES reporting can be used as Agilon just delivers the data.
Other	Technical report available to check the up-to-date fill rate, service logs and performance statistics.	For high volume picking, a streamlined user interface flow and multi access point operations can be configured.	Agilon Mobile works with any web browser provided with a modern smart phone.	Multi ERP configurations where item consumption must be reported to multiple ERP systems.

Web Portal

Access critical information about your automated warehouse Agilon system effortlessly with our user-friendly customer portal, **agilon.konecranes.com**. Gain round-the-clock access to detailed information, availability, and storage transaction data with package images. Logging in to our portal provides a convenient way to track, trace, and monitor intralogistics processes. Additionally, retrieve essential reports easily, empowering you with the data you need to make informed decisions. Agilon software provides features and functions tailored to these needs, enabling transparent, efficient and streamlined warehouse operations.

Master data

Basic item information consist of a unique ID, description, specifications and other necessary fields. It is possible to configure re-order points and order quantity, parameters for calculating inventory value, supplier information and tracking information like batch id or serial numbers. Data master can be either Agilon in standalone installation, or ERP system through integration.

Order management

Agilon can be configured to take care of the order process for all or certain items when the re-order point has been reached. Orders can be created manually, or semi-automatically based on balance alerts. In fully automatic orders process Agilon takes care of sending the orders either via e-mail or through integration API to the supplier. Order acknowledgements, goods receiving and possible cancellations are also handled.

User management

Each Agilon user is assigned to one or more user groups with appropriate level of privileges. Users can be managed either with Agilon Portal or via integration API if required. In addition to the basic user information like ID, email, cost centre, etc. even visibility of items can be limited. This will allow, for example, suppliers to view and edit the data for only those items they supply.

ITEMS

View and edit item master data. Importing from and exporting to Excel file.

INBOUND ORDERS

View and edit order data. Importing from ERP and exporting to Excel file.

Item	Description	Specification	Item barcode
50000184-2	NUT DIN934-M8-8-A3G		50000184-2
50000303-1	WASHER DIN125-A20-A3G	DIN125-A20-A3G-M20	50000303-1
50000496-1	NUT	DIN985-M6-8-ZN45	50000496-1
50001208-1	RETAINING RING	DIN471-15X1	50001208-1, 40.
50001471-1	SCREW DIN933-M8X10-8....	DIN933-M8X10-8-8....	50001471-1
50003100-1	LOCKING NUT	DIN985-M12-8-TZN	50003100-1
50003474-1	SCREW	DIN912-M6X20-8-8....	50003474-1
50004376-1	SCREW, DIN933-M6X12-8....	DIN933-M6X12-8-8....	50004376-1
50005446	U-PROFILE XM/XA-PS4R000...	XM/XA-PS4R00000...	50005446
50005447	U-profile	XM/XA-PS4R00000...	50005447
50005451	WASHER XM/XA-PS4R000...	XM/XA-PS4R000004	50005451
52265849	CABLE KC-H07RN-F3G1.5		52265849

PACKAGES

List of the current inventory in the system. View details about the contents: balance, weight, dimensions, photo and location.

PICKING LISTS

View, edit, add and delete picking lists. See their status and set them to work queue.

WORK QUEUE

Check the status of work queues of each access point. Re-arrange and delete them.

USERS AND GROUPS

Manage users and their privileges based on their work profile.

REPORTS

Download pre-defined reports on material consumption and status of inventory counting.

PACKAGES	PICKING LISTS	WORK QUEUES	ON LOAN	TRANSACTIONS	COST CENTERS	CONTRACTS	USERS	GROUPS	SETTINGS	REPORTS	MY PROFILE
<div> Import from file Delete Actions Download report </div>											
Supplier's item	Additional information	Unit weight (kg)	Picking rule	Cost tracking	Serial number tracking	Automatically orde...	Low balance t...	Balance	High balance thresh		
03178 005 100		0.00450	Oldest first	Default (Mandatory)	Default (Not tracked)	<input checked="" type="checkbox"/>	50	103			
040720 005 100		0.01481	Oldest first	Default (Mandatory)	Default (Not tracked)	<input checked="" type="checkbox"/>	20	84			
03686 961 100	AFP-2.0	0.00220	Oldest first	Mandatory	Default (Not tracked)	<input checked="" type="checkbox"/>	150	719			
043815 005 100	AFP-2.0	0.00067	Oldest first	Mandatory	Default (Not tracked)	<input checked="" type="checkbox"/>	101	297			
00578 10 005 100		0.00930	Oldest first	Default (Mandatory)	Default (Not tracked)	<input checked="" type="checkbox"/>	100	236			
039712 005 100		0.01479	Oldest first	Default (Mandatory)	Default (Not tracked)	<input checked="" type="checkbox"/>	200	256			
00846 20 005 100	AFP-2.0	0.00650	Smallest first	Mandatory	Default (Not tracked)	<input checked="" type="checkbox"/>	200	336			
00576 12 005 100		0.00450	Smallest first	Mandatory	Default (Not tracked)	<input checked="" type="checkbox"/>	50	552			
		2.16800	Oldest first	Default (Mandatory)	Default (Not tracked)	<input type="checkbox"/>		6			
PS4R000001.350		2.94700	Oldest first	Default (Mandatory)	Default (Not tracked)	<input type="checkbox"/>		0			
		0.31370	Oldest first	Default (Mandatory)	Default (Not tracked)	<input type="checkbox"/>		0			
			Oldest first	Default (Mandatory)	Default (Not tracked)	<input type="checkbox"/>		191			

Consumption tracking

Cost centers or work orders can be linked to consumption based on user authorization. Tracking can be managed at the item level and configured as either optional or mandatory. For enhanced security, validation of the correct tracking numbers can also be enforced

Access Point

The operators' main interface to Agilon is a feature-rich access point utilizing a touchscreen. The Agilon Access Point boosts productivity and efficiency within your organization by offering an extensive array of features that enable smooth management of tasks, data, and performance. Operators can log in using a PIN code, fingerprint identification, or an access card. To provide a simplified user experience and prevent unauthorized changes, many features can be restricted based on a user's privileges. It's also possible to limit an operator's visibility to specific items, which is particularly beneficial for vendor-managed inventory, ensuring vendors manage only the items they supply. To input data, the operator can use a virtual keyboard or the standard barcode reader that comes with the access point.

Retrieval

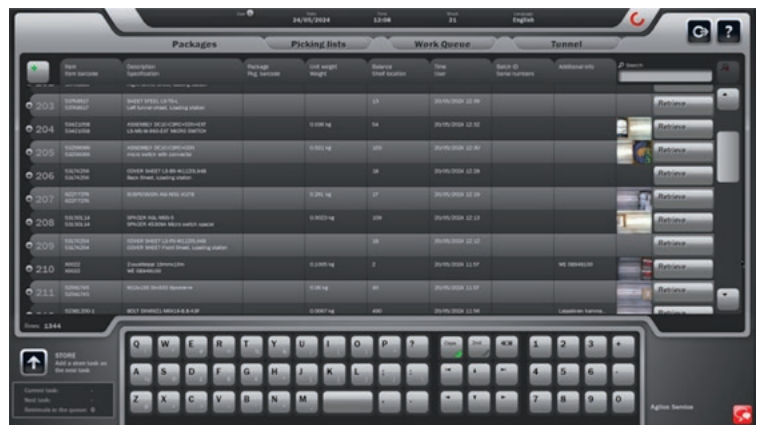
Comprehensive search function assisted with up-to-date photograph facilitate the easy location of items. Users can initiate multiple retrievals simultaneously to optimize time use and avoid waiting for materials to arrive.

Storage

Upon returning a retrieved package or storing a new one, the user interface offers control over the contents: specifying the item, quantity, and if necessary, additional details such as batch ID and serial numbers. A new photograph and the package weight are automatically recorded.

Order Picking

Picking lists are either static or dynamic based on the application requirements. These lists can be imported via the Web Portal or through an integration API and are displayed in priority sequence by Agilon. Retrieval for a specific picking list is streamlined by searching for the appropriate number or other identifier. For multi-line picking lists, a parallel picking operation mode is available, enabling two or more adjacent access points to enhance overall throughput. For further efficiency, multiple picking lists can be merged into a batch picking mode.



Replenishment and Goods Receiving

Goods can be received against orders originated from ERP or Agilon. Users can then process order lines using the Access Point user interface. To maintain the desired inventory rotation (FIFO) and track batch IDs correctly, it is advisable to use new packaging for restocking rather than replenishing an existing package. Agilon is also capable of managing multiple containers for a single item automatically.

Agilon Mobile

Agilon® Mobile helps you to manage materials and information flows with an easy-to-use web portal optimized for mobile devices. It has the features you need to speed up your daily warehouse management routines – for example, check item availability and perform transactions.

Agilon Mobile is an additional service for the Konecranes Agilon system. It allows you to include all your materials, even the heavy and bulky ones, in Agilon materials management.

Agilon® Mobile isn't just an additional feature for the Konecranes Agilon system. It's a versatile stand-alone solution that manages warehouse transactions and materials. Agilon Mobile is suitable for managing material flow, transactions and contents of your warehouse, wherever you may be.

Agilon Mobile is an easy and fast way to:

- Connect your personnel to materials management information and create a streamlined material flow.
- Connect various locations and external warehouses to the Agilon system.
- Gather transaction and usage data from consumables and materials in external warehouses.
- Monitor and manage electronic picking lists.
- Monitor open orders and confirm when ordered items have been received.



Bar code and QR code scanner integrated

Agilon Mobile can scan bar codes using the handheld's own camera. Portable scanners are not necessary to carry around. This will allow easy way to identify the right material on the locations where Agilon user interface is far away.

Always Connected

As Agilon information system is cloud based it requires stable network connectivity in order to function properly. Data transfer between the warehouse, Agilon Portal, Agilon Mobile and external systems are managed through cloud interfaces.

Agilon initiates a secure and encrypted VPN session to Agilon servers across Internet through LAN connection provided by the customer. VPN session is constantly open as Agilon Remote Center monitors warehouse performance and general functionality. If the primary connection is broken, the system will automatically fail over to mobile backup link. If both links are broken, the warehouse equipment will continue functioning but the data is not transferred until the connectivity is re-established. During this time the data in Agilon Portal and Mobile are not up-to-date. Also, ERP integration will not function properly as the data is not transported between the Agilon equipment and the cloud interface. When the connectivity is re-established, the gathered data is synchronized again and data is real-time in Agilon Portal and Mobile. Also, ERP integration will function again and gets automatically synchronized.

Network security

Agilon's actual network traffic is entirely through the encrypted VPN link. The system does not allow any traffic or connections from the outside, neither through the backup link nor the primary

connection from the local network. This is prevented with a software firewall. From the point of view of the customer's local network, the only connection is an outgoing connection to Agilon servers (VPN tunnel). Operating system in Agilon is Debian Linux. It is a minimal installation of the OS and all extra services have been disabled. The operating system packages are automatically updated whenever new packages are available.

Technical requirements for connectivity

Primary network link should be connected area network using standard RJ-45 Ethernet port. By default, Agilon acquires IP configuration using DHCP protocol from the LAN. It is also possible to configure a static IP address. It must however be agreed with Agilon Service representative at least one week before installation start date. Otherwise additional delays and related costs might occur. A detailed requirements documentation for the network connectivity is delivered in advance.



ERP Integrations

Agilon warehouse automation provides a comprehensive solution for modern warehouses by using robotics and the Internet of Things (IoT) to automate processes like inventory management, order fulfilment, and the internal movement of goods.

One of the key strengths of the Agilon system is its ability to integrate with a host of Enterprise Resource Planning (ERP) systems, including heavy-hitters like SAP, Microsoft Dynamics 365, and Oracle. This compatibility ensures that data can flow seamlessly between your warehouse management system and your ERP, providing real-time insights and streamlined operations.

Beyond ERP systems, Agilon's versatility extends to its compatibility with other critical software systems such as Manufacturing Execution Systems (MES) like AMOS and Arrow, Access control systems like Timecon and ESML, and Business intelligence

platforms like Power BI. This broad integration capability ensures that all aspects of your warehouse and business operations can communicate effectively, thereby providing a unified and transparent overview of your entire business.

By eliminating the need for manual data entry and fostering real-time synchronization with existing systems, Agilon empowers businesses to reduce errors, save time, and maximize operational efficiency. With this level of automation and integration, warehouse operations become more responsive and agile, capable of adapting to the demands of the modern supply chain environment.

Automation Interfaces


Agilon can control additional equipment to integrate light guided pick walls, trolleys, tables, conveyors and mobile robots.

These features are always tailored to customer needs. It is also possible to control Agilon as part of the larger automation system. For example, initiate retrievals from MES or WMC.





Konecranes is a global leader in material handling solutions, serving a broad range of customers across multiple industries. We consistently set the industry benchmark, from everyday improvements to the breakthroughs at moments that matter most, because we know we can always find a safer, more productive and sustainable way. That's why, with around 16,600 professionals in over 50 countries, Konecranes is trusted every day to lift, handle and move what the world needs. In 2023, Group sales totalled EUR 4.0 billion. Konecranes shares are listed on Nasdaq Helsinki (symbol: KCR).

© 2024 Konecranes. All rights reserved. 'Konecranes', 'Moves what matters' and  are either registered trademarks or trademarks of Konecranes.

This publication is for general informational purposes only. Konecranes reserves the right at any time, without notice, to alter or discontinue the products and/or specifications referenced herein. This publication creates no warranty on the part of Konecranes, express or implied, including but not limited to any implied warranty or merchantability or fitness for a particular purpose.

KONECRANES Moves what matters.